



With the Redilight remote control you can easily adjust lighting levels of your Redilight Skyfixture (solar LED light fitting) to suit any occasion.

Find the perfect level of light with the versatile dimming function, or simply turn the light on and off as you need.

The Redilight remote control can also be easily retrofitted to existing Redilight systems for the perfect smart LED lighting solution.

## Kit Contents:

- A. Remote Driver (1)
- B. Remote Control Handset (1)
- C. 23A 12V Battery (1) in Handset



A



B



C



### Important: Prior to syncing remote enabled driver to handset

- Ensure the remote enabled light driver is installed as per the installation instructions provided with your Redilight kit.
- To sync the remote handset, the remote enabled driver must be connected to a power source

## Using the Remote Controlled Handset

---

The remote control handset has a simple interface containing three buttons. The function of each button is outlined below.



---

### Up Arrow Button

- Increases brightness of the Skyfixture
- FIRMLY PRESS button for 10% light increase intervals
- HOLD button for continual increase

---

### Central Button

- FIRMLY PRESS button to turn Skyfixture on/off

---

### Down Arrow Button

- Decreases brightness of the Skyfixture
  - FIRMLY PRESS button for 10% light decrease intervals
  - HOLD button for continual decrease
- 

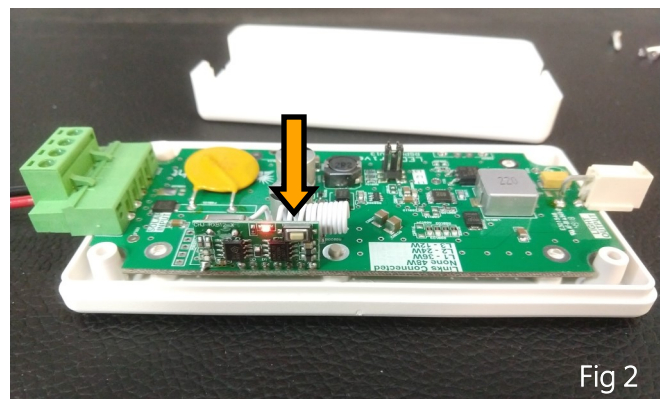
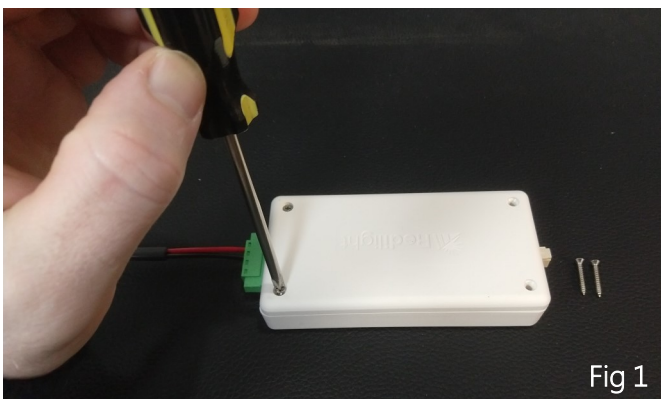
### Please Note

---

Due to the sturdy design of the remote control handset, it is important that sufficient pressure is applied when pressing buttons. If the button does not respond to your command, try a slightly firmer press. Avoid pressing the button repeatedly at quick intervals as this may unsync light fixtures from the handset.

## Synchronizing Remote Enabled Driver to Handset

1. Unscrew the four screws from the back of the Light Driver. (Fig 1)
2. Turn the driver over, remove the casing, and set aside with the screws.
3. Locate the small white button on the receiver PCB next to the red LED. (Fig 2)  
(If the red LED is not lit, ensure the driver is receiving power)



4. Press the white button on the receiver PCB with your finger. Done correctly, the red LED will turn off.
5. Press any of the buttons on the Remote Handset.  
(The red LED on the receiver PCB will flash to indicate the sync has been successful.)
6. Place the case back on the driver and reinstall all four screws to secure case.



## Other Synchronization Options and Troubleshooting

### Other Synchronization Options

- To add another remote to a driver, repeat steps 1-6 with each additional handset.
- To synchronize more drivers to a single remote, repeat steps 1-6 with each additional driver
- **To erase all driver pairings:** Locate the small white button inside the driver (Fig 2) and press and hold. The red LED will turn off. Continue holding button until red LED turns on again (approx. 8 seconds) then release the button. All stored pairings will have been erased.

### Troubleshooting

- If multiple lights are paired to a single remote, it is possible for the on/off cycles to be desynchronized. To get all lights to turn on or off simultaneously, press and hold the central on/off button for 5 seconds. When all the lights turn off, release the on/off button.

### Changing the default start-up setting

The default start-up state of the Skyfixture is set to ON - this is known as the "sun-up effect". The "sun-up effect" means that if the Skyfixture is turned off during the day, the luminaire will automatically light up again the following morning when power is generated by the solar panel. To change the default state of the Skyfixture:

- PRESS AND HOLD the On/Off button for 10 seconds.
- The light will flash to acknowledge the switch from Default On to Default Off.
- Repeat the process the toggle the modes as desired.